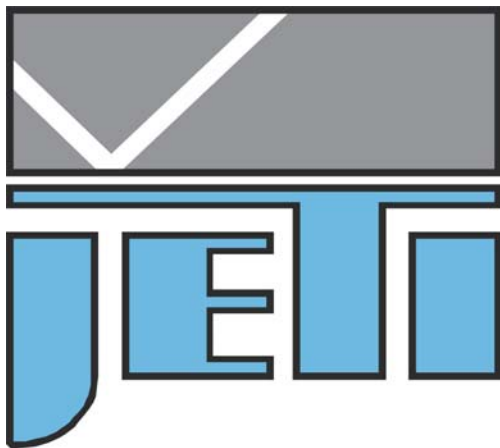


# **JETI USB Driver V2.2.4 Installation Guide**



**JETI Technische Instrumente GmbH  
Tatzendpromenade 2  
D-07745 Jena**

**Tel.: +49-3641-225680**

**Fax: +49-3641-225681**

**e-mail: [sales@jeti.com](mailto:sales@jeti.com)**

**internet: [www.jeti.com](http://www.jeti.com)**

---

## Table of contents

<b>1</b>	<b>New installation of driver software.....</b>	<b>3</b>
1.1	INSTALLATION UNDER WINDOWS 2000 .....	3
1.2	INSTALLATION UNDER WINDOWS XP.....	3
1.3	INSTALLATION UNDER WINDOWS VISTA.....	4
<b>2</b>	<b>Updating driver software .....</b>	<b>5</b>
2.1	INSTALLED DRIVER SOFTWARE IS UP-TO-DATE.....	5
2.2	INSTALLED DRIVER SOFTWARE IS OUT-OF-DATE.....	5
<b>3</b>	<b>Uninstall driver software .....</b>	<b>6</b>
3.1	UNINSTALL DRIVER UNDER WINDOWS 2000/XP USING FTCLEAN.....	6
3.2	UNINSTALL DRIVER UNDER WINDOWS VISTA USING DEVICE MANAGER .....	7
<b>4</b>	<b>Determine driver software version .....</b>	<b>8</b>
<b>5</b>	<b>How to open the Windows device manager .....</b>	<b>9</b>
5.1	WINDOWS 2000/XP .....	9
5.2	WINDOWS VISTA .....	9

# 1 New installation of driver software

**Please note that you must have administrator privileges to install the device driver!**

This chapter describes the installation procedure of the USB driver if no previous version of the software and/or driver was installed on the computer.  
If there was already installed a previous version, please go on reading chapter 2 “Updating driver software”.

## 1.1 Installation under Windows 2000

- 1) First insert the CD-ROM delivered with your device into the CD/DVD drive.
- 2) If Autorun is enabled on your PC an installation program could start automatically. Please exit this program by clicking on **Exit Install**.
- 3) Connect your device to a USB-port.
- 4) A ‘New Hardware found’ wizard should appear with a welcome text. Click on **Next**.
- 5) Select ‘Search for a suitable driver for my device (recommended)’ and click on **Next**.
- 6) Only select ‘CD-ROM drive’ as source and click on **Next**.
- 7) Windows should find the driver files on the CD-ROM. Click on **Next** to install the driver.
- 8) After a successful installation click on **Finish** to complete the procedure.
- 9) The JETI USB driver consists of two parts, so the procedure must be repeated starting with point 4)

If the driver couldn't be installed successfully please read chapter 3 “Uninstall driver software” first and try again.

## 1.2 Installation under Windows XP

- 1) First insert CD-ROM delivered with your device into the CD/DVD drive.
- 2) If Autorun is enabled on your PC an installation program could start automatically. Please exit this program by clicking on **Exit Install**.
- 3) Connect your device to a USB-port.
- 4) A ‘New Hardware found’ wizard should appear. If it asks to connect to Windows Update answer with ‘No’.
- 5) Select ‘Install software automatically (recommended)’ and click on **Next**.
- 6) Windows should find the correct driver on the CD and will begin to install it. If a warning window appears that the software has not passed Windows Logo testing, click on ‘Continue Anyway’.
- 7) After a successful installation click on **Finish** to complete the procedure.
- 8) The JETI USB driver consists of two parts, so the procedure must be repeated starting with point 4)

If the driver couldn't be installed successfully please read chapter 3 “Uninstall driver software” first and try again.

## 1.3 Installation under Windows Vista

- 1) First insert CD-ROM delivered with your device into the CD/DVD drive.
- 2) If Autorun is enabled on your PC an installation program could start automatically. Please exit this program by clicking on **Exit Install**.
- 3) Connect your device to a USB-port.
- 4) A 'New Hardware found' window should appear. Select 'Locate and install driver software (recommended)'.
- 5) If required confirm the message from the 'User Account Control' by clicking on **Continue**.
- 6) If windows asks to search online for driver select 'Don't search online'.
- 7) Windows asks to insert the driver CD-ROM. It should already be inserted, so click on **Next**.
- 8) If a 'Windows Security' window appears that Windows can't verify the publisher of the driver software select 'Install this driver software anyway'
- 9) After a successful installation click on **Close** to complete the procedure.
- 10) The JETI USB driver consists of two parts, so the procedure must be repeated starting with point 6)

If the driver couldn't be installed successfully please read chapter 3 "Uninstall driver software" first and try again.

## 2 Updating driver software

*Please note that you must have administrator privileges to update the device driver.*

This chapter describes the installation procedure of the USB driver if a previous version of the driver software was installed on the computer.

If there was no previous version installed on this computer, please go on reading chapter 1 “New installation of driver software”.

There are two ways to update the driver, depending on the driver version already installed on the computer. To determine the driver version please read chapter 4 “Determine driver software version”.

### 2.1 Installed driver software is up-to-date

If the driver software already installed is version **2.2.4** or higher then no update of the driver software is necessary.

Just install the driver as follows:

#### 2.1.1 Windows 2000

- 1) Connect the new device to the USB port
- 2) Wait until Windows will install the driver automatically.
- 3) Insert the CD-ROM in your CD/DVD drive if requested.

#### 2.1.2 Windows XP

- 1) Connect the new device to the USB port
- 2) A ‘New Hardware found’ wizard should appear. If it asks to connect to Windows Update answer with ‘No’.
- 3) Select ‘Install software automatically (recommended)’ and click on **Next**.
- 4) Windows should install the driver automatically. Insert the CD-ROM in your CD/DVD drive if requested.
- 5) The JETI USB driver consists of two parts, so the procedure must be repeated starting with point 3)

#### 2.1.3 Windows Vista

- 1) Connect the new device to the USB port
- 2) Wait until Windows will install the driver automatically.
- 3) Insert the CD-ROM in your CD/DVD drive if requested.

### 2.2 Installed driver software is out-of-date

If the driver software already installed is prior version 2.2.4, then you have to uninstall the old driver (chapter 3 “Uninstall driver software”) before you can install the new driver (chapter 1 “New installation of driver software”).

### 3 Uninstall driver software

*Please note that you must have administrator privileges to uninstall the device driver.*

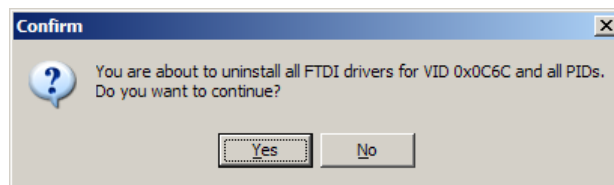
This chapter describes the procedure to uninstall old driver software.

#### 3.1 Uninstall driver under Windows 2000/XP using FTCClean

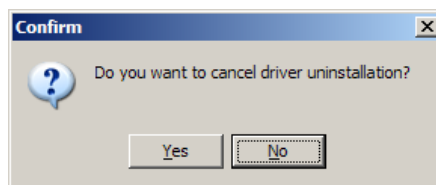
- 1) Run 'FTClean.exe'. You can find this program on your JETI CD-ROM in the directory 'Tools\FTClean'
- 2) After starting the program the VID has to be changed to hex 0C6C



- 3) Click on **Clean System** to start the uninstall of the driver software.
- 4) Make sure that no JETI USB-device is connected to the computer and click **OK**.
- 5) Answer the first confirmation with **Yes**



- 6) Answer the second confirmation with **No**



- 7) Please wait while the drivers are uninstalling. This could take some time.
- 8) The system now should be cleaned from all old JETI drivers. Close the program by clicking on **Exit**.

**In case of an error message "File access denied" you have to delete the file 'ftdiun2k.ini' by hand. You will find this file on your hard disk in the directory 'windows\system32' (Windows XP/Vista) or 'winnt\system32' (Windows 2000).**

To install the new driver please read chapter 1 'Installation of driver software'.

## 3.2 Uninstall driver under Windows Vista using device manager

For this procedure the device which was already installed with the old driver software must be connected to the computer.

- 1) Open the device manager (see chapter 5 “How to open the Windows device manager”).
- 2) Open the branch ‘Ports (COM & LPT)’ by clicking on the small plus-sign.
- 3) Right-click on the ‘JETI specbos xxxx Port’ (or ‘JETI Composite Port’) entry and choose ‘Properties’ from the context menu.
- 4) At the appearing property window open the tab ‘Driver’ by clicking on it.
- 5) Click on ‘Uninstall’ to uninstall the driver.
- 6) You have to confirm the device uninstall. Select the option ‘Delete the driver software for this device’ and click **OK**.
- 7) Open the branch ‘Universal Serial Bus controllers’ by clicking on the small plus-sign.
- 8) Right-click on the ‘JETI specbos xxxx Device’ (or ‘JETI Composite Device’) entry and choose ‘Properties’ from the context menu.
- 9) At the appearing property window open the tab ‘Driver’ by clicking on it.
- 10) Click on ‘Uninstall’ to uninstall the driver.
- 11) You have to confirm the device uninstall. Select the option ‘Delete the driver software for this device’ and click **OK**.

## 4 Determine driver software version

Please note that for this procedure the device which was already installed with the old driver software must be connected to the computer.

JETI USB driver consists of two parts, a device driver and a virtual com port driver. For a proper function of the device the versions of the two drivers must be the same.

To determine the version of the virtual com port driver:

- 1) Open the device manager (see chapter 5 “How to open the Windows device manager”).
- 2) Open the branch ‘Ports (COM & LPT)’ by clicking on the small plus-sign.
- 3) Right-click on the ‘JETI specbos xxxx Port’ (or ‘JETI Composite Port’) entry and choose ‘Properties’ from the context menu.
- 4) At the appearing property window open the tab ‘Driver’ by clicking on it.
- 5) On the appearing page you can find the driver version and the driver date.

To determine the version of the device driver:

- 1) Open the device manager (see chapter 5 “How to open the Windows device manager”).
- 2) Open the branch ‘Universal Serial Bus controllers’ by clicking on the small plus-sign.
- 3) Right-click on the ‘JETI specbos xxxx Device’ (or ‘JETI Composite Device’) entry and choose ‘Properties’ from the context menu.
- 4) At the appearing property window open the tab ‘Driver’ by clicking on it.
- 5) On the appearing page you can find the driver version and the driver date.

## 5 How to open the Windows device manager

The Windows device manager shows information about the devices installed in your computer. To open the device manager there are several ways, depending on the Windows version and the settings of Windows.

### 5.1 Windows 2000/XP

- 1) Press the Windows Key on your keyboard together with the Pause Key.
- 2) Click on the tab 'Hardware' and then on the Button 'Device Manager'.

### 5.2 Windows Vista

- 1) Press the Windows Key on your keyboard together with the Pause Key.
- 2) Click on 'Device Manager' on the left side of the appearing window.
- 3) If required confirm the 'User Account Control' by clicking on 'Continue'