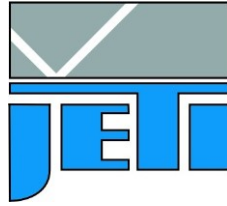


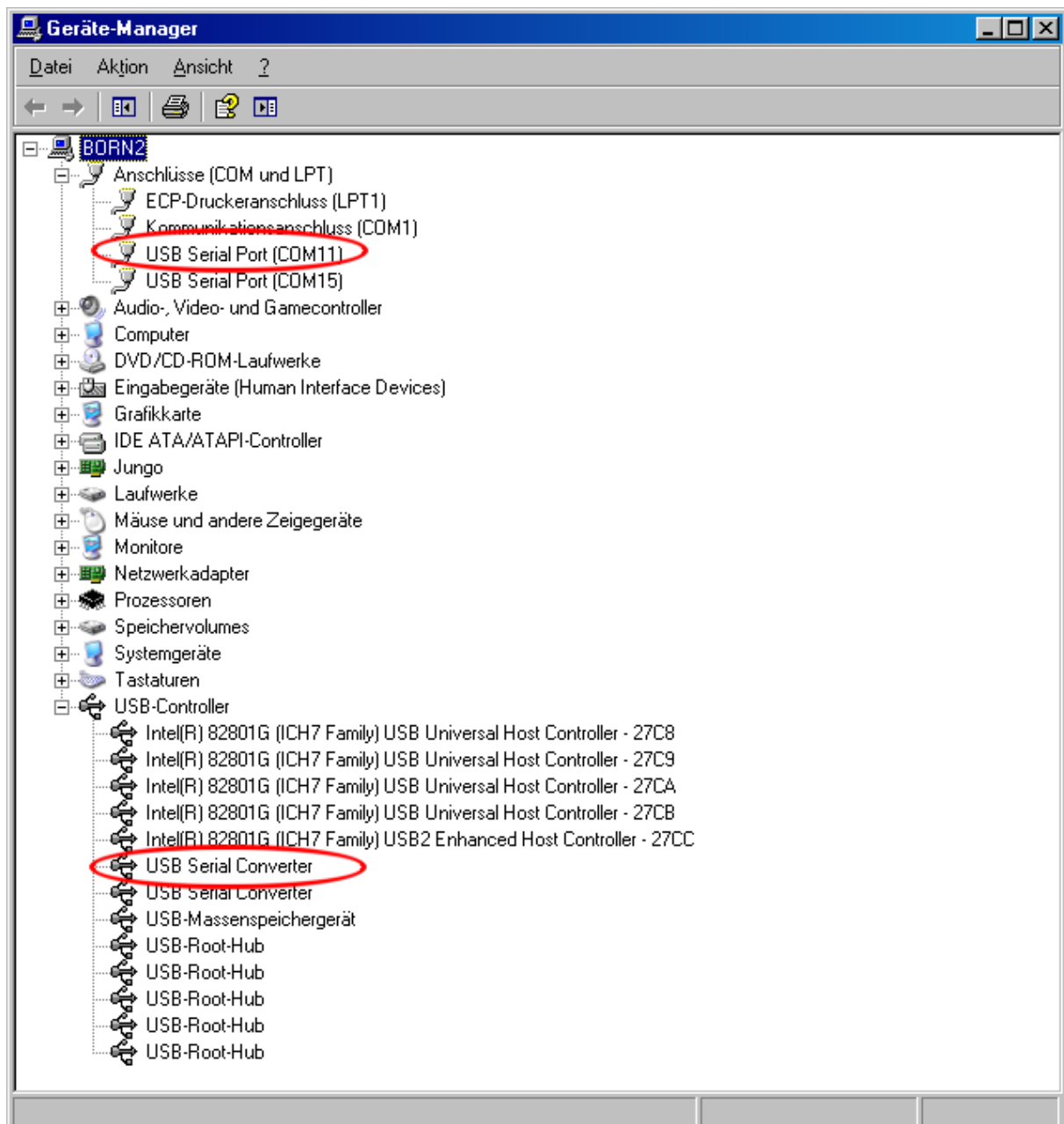
Technical Note 9



JETI Technische Instrumente GmbH
Göschwitzer Straße 48
D - 07745 Jena
Germany
Tel. : +49 3641 23292 00
Fax : +49 3641 23292 01
e-mail : sales@jeti.com
Internet: www.ieti.com

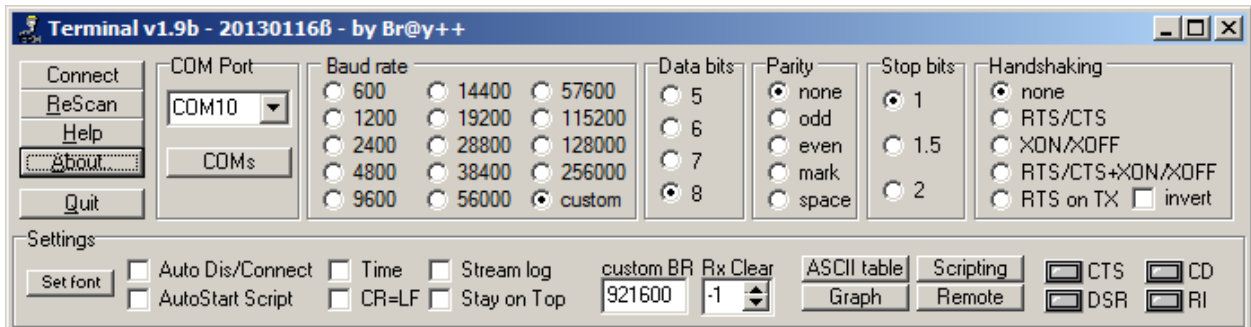
Testing the communication with Terminal

To check the communication, verify that the driver is installed properly. In the 'Device Manager' there must be two entries similar to the following picture:



The easiest way to check the communication with firmware commands is to use any terminal program, which allows communication through a COM-port.

Let us take the *Terminal* freeware program. First of all, we do the necessary settings as follows:



Important are: baud rate – we set its radio button onto “custom” and input the value of 921600 in the “custom BR”-input field below. If you have a specbos 1211 BT or RS, use 115200 setting.

Data bits is set to 8, *stop bits* is set to 1, *handshaking* is set to “none”.

Then choose the COM-port, to which the device is connected, from the drop-down list and click *Connect*.

Now we are about to send something to the COM-port. Type “*idn?” and press *Enter*. If all the settings are correct, the device will give you an answer, for example, “JETI_SB1211”.

If nothing happens, try to connect with a different baudrate. Also, possible settings are 38400, 115200 or 3000000 Baud.