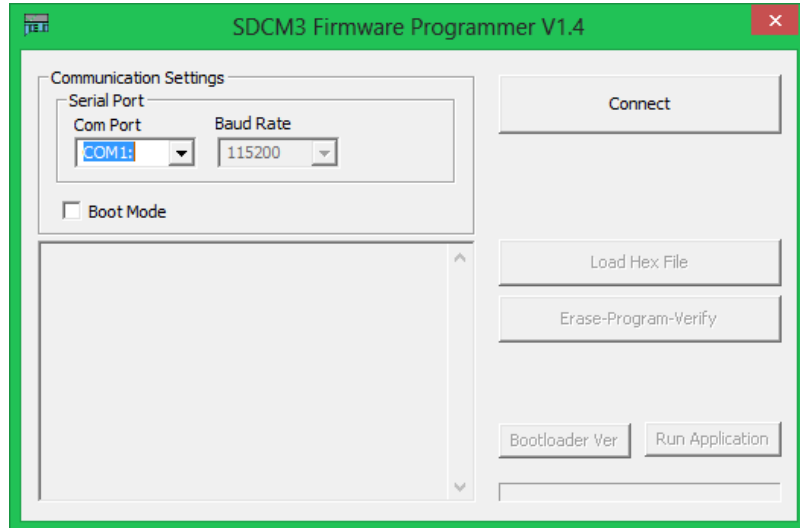
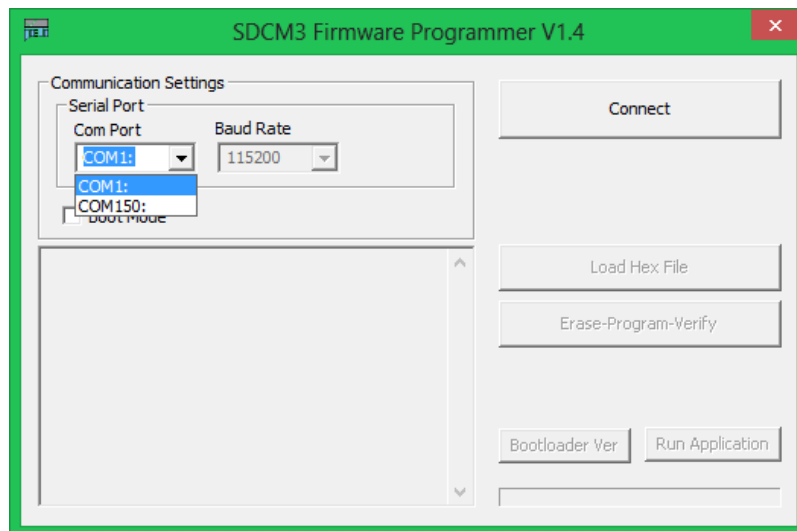


Updating the Firmware of JETI spectraval

1. Start the programming tool SF Prog.exe

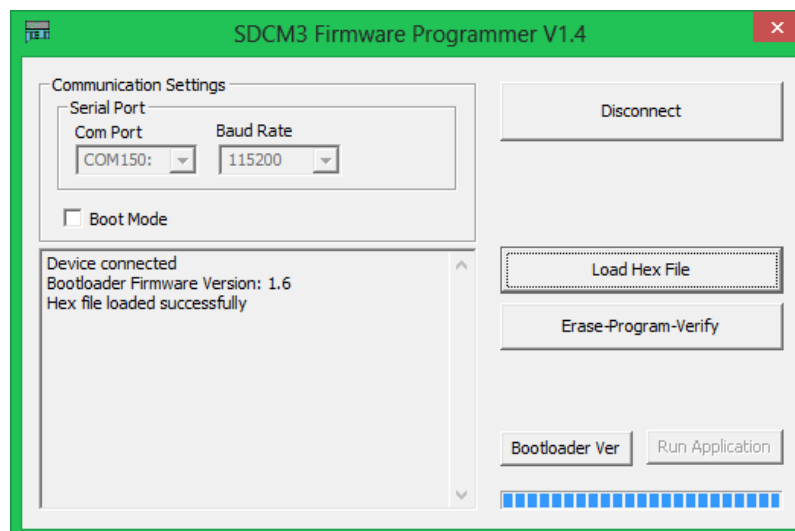
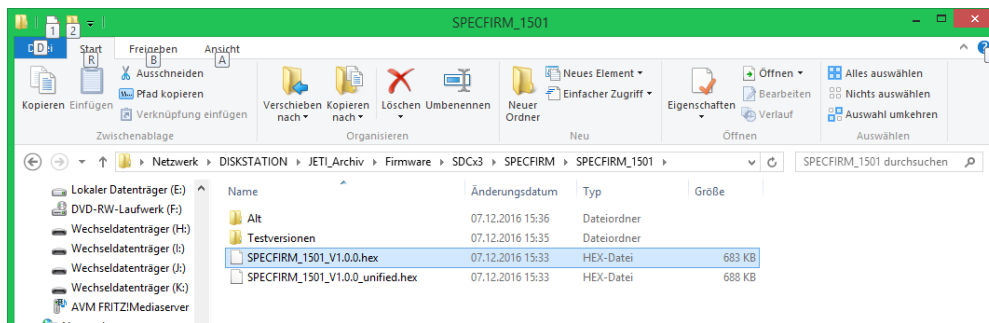
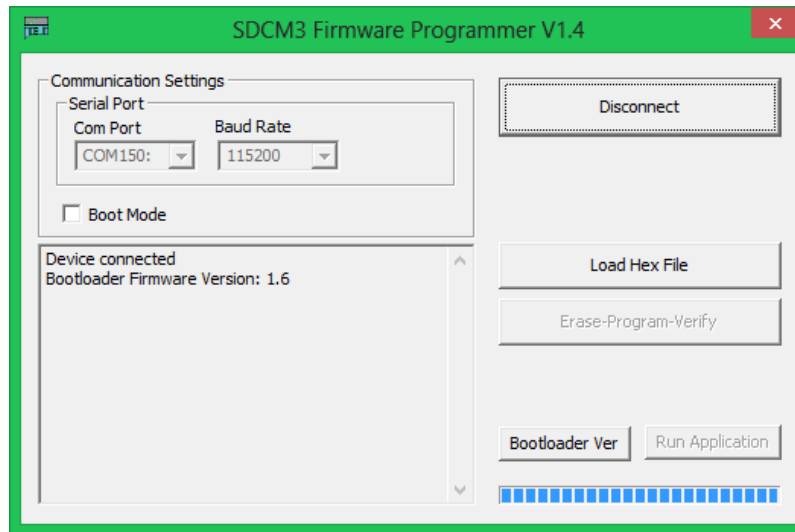


2. Connect the spectraval unit via USB port to the PC
3. Select the correct COM port (in case of problems: check the COM port number in the device manager)

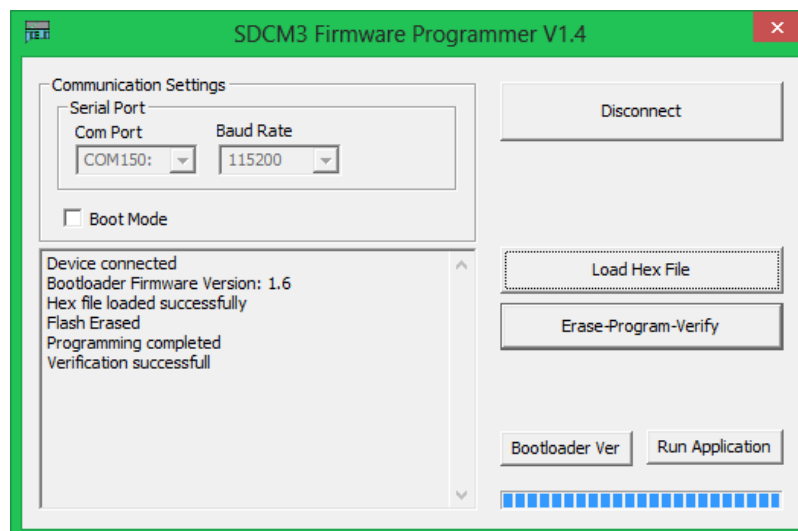
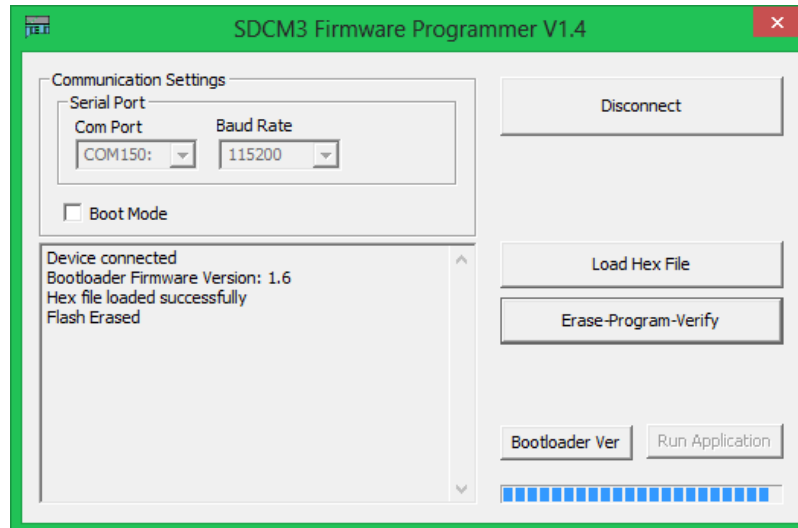


4. Download the spectraval firmware file and unzip it

5. Load the file by pressing the **Load Hex File** button and selecting it in the appropriate folder



6. Press the Erase-Program-Verify button and wait for the finalization of the programming (Verification successful)



7. Press the Disconnect button, close the software and confirm the exit

